

The Nest

powered by **CFT**

Technical Specification

1 Venue Specification	3
1.1 Contact	3
1.2 Access	3
1.3 Dressing rooms	3
1.4 Dimensions & Formats	3
1.5 Lighting	5
1.6 Sound	5
1.7 Video	5
1.8 Environmental	5
2 Equipment Specification	6
2.1 Lighting	6
2.1.1 Fixtures	6
2.1.2 Control	6
2.1.3 Rig Layout	6
2.1.4 Show File	6
2.2 Sound	6
2.2.1 Speakers	6
2.2.2 Control & Amplifiers	6
2.2.3 Microphones, Microphone Stands, Cabling & DI	7
2.3 Video	7
2.3.1 Projection	7
2.4 Rigging	7
2.4.1 Grid	7
2.4.3 Access Equipment	7
2.4.4 Set & Masking	8
2.5 Temporary Power	8
2.6 Venue Format	8
2.6.1 Default venue layout (Thrust)	8
2.7 Recharges	8
3 LX House Rig Plan	9

Please check this is the most up to date copy of this document before arrival.

1 Venue Specification

1.1 Contact

For technical enquiries, please contact:

Sam Cole
The Nest Technician
sam.cole@cft.org.uk

1.2 Access

Vehicle load-in positioning for The Nest will be decided on the day, upon arrival report to stage door at the Festival Theatre to discuss with the technical team the best approach, all vehicles must be moved immediately after completion of the load in. Access to The Nest is through a door at the rear of the stage, using the side that is adjacent to the CFT Main House. The load-in door is 2m x 1m and provides level access to the space.

1.3 Dressing rooms

The Nest does not have dedicated dressing rooms; we provide a small, concealed space in the stage right wing with a table, mirror, chair and costume hooks.

Green room access is available in the Festival and Minerva Theatres with a vending machine, water dispenser and tea and coffee making facilities.

1.4 Dimensions & Formats

Stage

Stage flooring is a black wood floor covered with black dance floor.

Thrust setting line width - 4.60M Deep x 5.40M Wide

Stage Size (with front row on stage, to back wall) - 5.5M Deep x 7.356M Wide

Lighting Bar Height - 3.47M

Two Modtruss beams run US to DS on setting line, Beam Height - 3.15M

Lowest hanging unit - Speakers on stage - 2.8M

Auditorium consists of four rows of raked seating on three sides, seating 122.



1.5 Lighting

The Nest uses an Etc Ion (with a 2 x 10 fader wing), over 2 universes. The control position sits at the rear of the auditorium on stage right, all house equipment lives on Universe 1, leaving Universe 2 free for additional fixtures.

Data is run over 5 pin DMX from the control position to an USL Splitter & Beta Pack, from which hot power and DMX run to each fixture.

1.6 Sound

The Nest's PA is hung at midstage, with two centre fills, two side fills and two subs. Control is from the operating position in the rear of the auditorium on stage right. There is a 12 way Stage Snake run to USR for XLR inputs, and CAT5 running to USL to allow Dante amp control.

1.7 Video

The Nest has a Panasonic PT-RZ970B permanently mounted from the roof near the setting line downstage. Control is via HDMI to CAT5 and is accessible from the operating position or from upstage behind the rear blacks.

1.8 Environmental

CFT is committed to reaching carbon net zero by 2035 and asks all companies and stakeholders to consider their impacts on the environment when visiting or working with us.

- We offer plastic, paper and general waste at all collection points.
- In the green rooms there are food waste bins.
- At the stage door and backstage in the Minerva by the green room there is battery and toner/print cartridge recycling.
- We do not provide single use receptacles back of house; there are free to use mugs and glasses in green rooms, please make sure these are returned after use.
- We offer vegetarian and plant-based food options - mostly sourced locally - at all food outlets and company members get a discount in our café's if they are wearing their lanyards (supplied on arrival).
- All areas have low energy lighting with absence detection controls, water saving toilets and sinks, recycled paper products- and we generate our own energy through ground source heat pumps and Mechanical Vent Heat Recovery systems.

There is always more we can do though- so if you have any ideas or questions, please feel free to email us on green@cft.org.uk

2 Equipment Specification

2.1 Lighting

2.1.1 Fixtures

8 x Color Source Spot Jr Profiles
6 x Color Source V Fresnels
5 x Chauvet Ovation Cyc 1 FC
2 x Rogue R2E Spot Moving Lights
1 x Unique 2.1 Hazer

House Light - 1 x Glasson DFS3000 Dome RGBW, Split into 4 controllable channels.

2.1.2 Control

1 x Etc Ion Classic with fader wing
1 x Beta Pack 4 (6 Hard Power, 6 Dimmers)
1 x Rack Split Octo 8 Way Buffer

2.1.3 Rig Layout

The Nest has a fully LED lighting rig. (plan on page 9)

If your show requires anything additional from our house rig, please get in touch so we can accommodate you. All pre-rigging will need to be agreed in advance.

2.1.4 Show File

The Base ETC EOS Show File for The Nest is available on request.

2.2 Sound

2.2.1 Speakers

2 x EM Acoustics EMS 101X (Central Seating)
2 x EM Acoustics EMS 81X (Side Seating)
2 x EM Acoustics S-12 (Flown Subs)

2.2.2 Control & Amplifiers

EM Acoustics Di 10 Amplifier (8 Channel)
QU-5D with Dante Card (Channels - 16 local in, 16 digital in, 12 local outs)

Control from desk to amplifiers via Dante through a network switch located in the operating position.

2.2.3 Microphones, Microphone Stands, Cabling & DI

4 x Shure SM58
2 x Shure SM57
2 x Overheads
4 x Passive DI Box

4 x Boom Stands
2 x Round Base Straight Stands

A variety of 3, 5 and 10 metre XLR and ¼ inch jack cabling.

2.3 Video

We can only accommodate front projection with house equipment, the screen can slide up and down stage and is mounted on a tab track to allow for easy moving.

2.3.1 Projection

Panasonic PT RZ970B projector,
WASJOYE 100" pull down screen

2.4 Rigging

2.4.1 Grid

The Nest's ceiling mostly consists of bolted sections of ModTruss, ModTruss is a four-sided aluminum beam with evenly spaced holes along its length allowing for easy rigging. All rigging must be completed by competent trained persons.

The Nest has an upstage moveable curtain track. This allows for flexible rear masking placement. This runs from the back wall up to the start of the thrust section.

2.4.2 Flying

There is no permanent fly system in place in The Nest.

2.4.3 Access Equipment

All access equipment must be used by trained and competent people. CFT will always provide a trained technician to assist with work at height.

2.4.4 Set & Masking

The Nest has four flexible 3m x 1m hard masking flats. The floor of The Nest cannot be screwed into, so companies must provide an alternative way of stabilising and securing masking and set.

2.5 Temporary Power

The Nest has one 63A 3 phase located off stage USL, this is connected to a distro with 32A & 16A outputs. Additionally, there is a ring of 13A power surrounding The Nest, with four available upstage, and dotted throughout the auditorium.

2.6 Venue Format

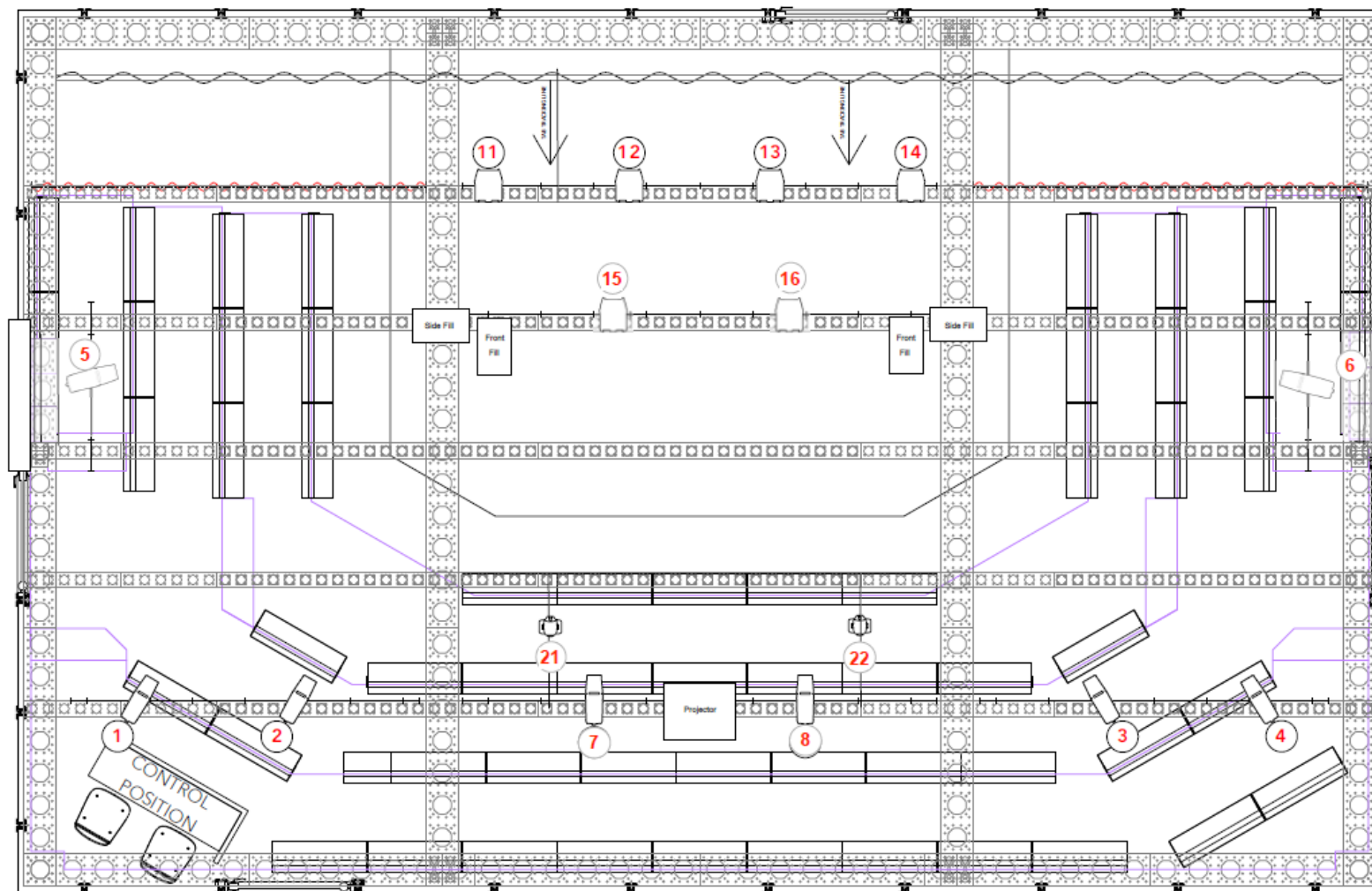
2.6.1 Default venue layout (Thrust)

The Nest's default layout seats 122 in a Thrust format, with three accessible seats that can be removed to accommodate wheelchair access.




The entire front row of seating can be removed upon request and when agreed in advance.

2.7 Recharges

Some equipment may incur a recharge, please contact The Nest Technician to discuss this



FIXTURES

-  ColorSource Fresnel V
-  ColorSource Spot JR
-  Rogue R2E Spot

THIS DRAWING REPRESENTS AN ARTISTIC CONCEPT AND CONSTRUCTION SUGGESTIONS ONLY AND IS NOT A PRACTICAL INSTRUCTION ON HOW IT IS TO BE ACHIEVED. THE DESIGNER IS UNQUALIFIED TO DETERMINE THE STRUCTURAL AND ELECTRICAL APPROPRIATENESS OF THIS DESIGN. NO LIABILITY IS ACCEPTED FOR ANY ACTIONS RESULTING FROM THIS DRAWING.

**chichester
festival
theatre**
E - TECHNICAL@CFT.ORG.UK
T - 01243 784437
W - WWW.CFT.ORG.UK

THE NEST

Title
LIGHTING - WITH TRUSS

Drawing Number
3

Scale
1:20

Date
May 2025

CAD File Name
NEST LX V2.vwx

Last updated Jan 2026 - Sam Cole, The Nest Technician